



NYYC One-Design Regatta

Newport, Rhode Island
June 29-30, 2019

SAILING INSTRUCTIONS incorporating AMENDMENT 1 (in red)

1 RULES

- 1.1 The regatta will be governed by the rules as defined in the current Racing Rules of Sailing (RRS) and Class Rules for one-design classes.
- 1.2 US Sailing Prescriptions 63.2 and 63.4 are deleted.
- 1.3 If there is a conflict between rules or regulations, other than RRS, the sailing instructions will prevail. This changes RRS 63.7.
- 1.4 All competing boats shall carry a handheld VHF radio for safety purposes and Race Committee communication.

2 COMMUNICATION: NOTICES, ANNOUNCEMENTS, VHF CHANNELS

- 2.1 Notices, including race documents, amendments, and results, will be posted on the Official Notice Board located in the courtyard at the NYYC Sailing Center at Harbour Court and may also be posted on the event website at www.nyyc.org.
- 2.2 Any change to the sailing instructions will be posted before 0900 hours on the day it will take effect, except that any change to the schedule of races will be posted by 2000 hours on the day before it will take effect.
- 2.3 In addition to the signals made in 3.3, the Race Committee will confirm the rendezvous locations as described in **SI 6** at 0900 over VHF Channel 72. The failure to make this announcement or for a boat to hear this announcement will not be grounds for a boat to request redress. This changes RRS 62.1(a).
- 2.4 After the rendezvous locations and any other regatta announcements have been made, Race committee signal boats will monitor and communicate with their respective classes on the circle VHF channels published in SI 2.5.
- 2.5 VHF Channels - The Race Committee VHF channel for each circle is shown below:
 - a) Blue Circle VHF Channel 72
 - b) White Circle VHF Channel 71

3 SIGNALS MADE ASHORE

- 3.1 Flag signals will be flown from the western yardarm at Harbour Court.
- 3.2 When flag AP is displayed ashore, '1 minute' is replaced with 'not less than 60 minutes' in race signal AP. This changes RRS Race Signals.
- 3.3 Signals designating the rendezvous locations for all circles will be displayed at 0900 each day from the flagpole at Harbour Court.
- 3.4 When flag Y is displayed ashore, RRS 40 applies at all times while afloat. This changes RRS Part 4 Preamble.

4 SCHEDULE OF EVENTS

- | | | | |
|-----|-------------------|--------------|-------------------------------------|
| 4.1 | Saturday, June 29 | 0730-0930 | Registration at NYYC Sailing Center |
| | | 1100 | First Warning Signal |
| | | After Racing | Regatta BBQ at NYYC Harbour Court |
| | Sunday, June 30 | 1100 | First Warning Signal |
| | | After Racing | Prize Giving at NYYC Harbour Court |

- 4.2** When more than one race will be held on the same day, the warning signal for each succeeding race will be made as soon as practicable.
- 4.3** For all classes on the final day of the regatta, the initial warning signal for the final race of the first class will not be made after 1500 hours. The warning signal for a start following one or more general recalls, or for subsequent classes may be made after 1500.

5 CLASS FLAGS AND CIRCLE ASSIGNMENTS

5.1 Class flags will be as follows:

- Melges IC37: white flag with class insignia
- Melges 20: white flag with class insignia
- Melges 24: Code Flag K
- J/70: white flag with class insignia

5.2 The Melges IC37 are assigned to the Blue Circle. The Melges 24s, Melges 20s, and J/70s assigned to the White Circle.

5.3 J/70s: Bow numbers may be supplied by the OA. In the event they are, they shall be attached to the forward 20% of both sides of the boat's hull, with the top approximately 15-25 cm below deck level and with the leading edge as far forward as possible and no more than 50 cm aft of the bow.

6 RENDEZVOUS

Circle rendezvous locations are listed below and will be designated as described in SI 2.3 and SI 3.3. See SI Addendum A – NYYC Primary Race Areas.

Rhode Island Sound:

- Area "A" -in the vicinity of 160° M for 1.2 NM from R "2" QR Whistle marking Brenton Point
- Area "B" -in the vicinity of 120° M for 2.5 NM from R "2" QR Whistle marking Brenton Point
- Area "C" -in the vicinity of 275° M for 3.0 NM from R "2" QR Whistle marking Brenton Point
- Area "D" -in the vicinity of 225° M for 2.0 NM from R "2" QR Whistle marking Brenton Point
- Area "E" -in the vicinity of 165° M for 5.0 NM from R "2" QR Whistle marking Brenton Point
- Area "F" -in the vicinity of 145° M for 3.5 NM from R "2" QR Whistle marking Brenton Point

Newport Harbor and near Newport Bridge:

- Area "K" -between Goat Island and Rose Island
- Area "M" -in the vicinity of R "12" west of Rose Island
- Area "O" -in the vicinity of Potter Cove (just north of west end of Newport Bridge)

North of Newport Bridge:

- Area "R" -in the vicinity of 200° for 0.5 NM from Halfway Rock
- Area "T" -in the vicinity of G "7" QG off Quonset Point

7 CHECK-IN AND RETIREMENT

- 7.1 Check-in on Land:** Each yacht shall check-in at the registration desk at the NYYC Sailing Center at Harbour Court during the registration times so designated in the notice of race.
- 7.2 Check-in on Water:** Prior to the warning signal for the first race, each boat shall check in with the Race Committee signal boat in their rendezvous area by passing astern and announcing their sail number.
- 7.3** Boats retiring are requested to inform the Race Committee on their circle VHF channel ~~72~~ or by calling the NYYC Sailing Office at (401) 845-9633.

8 THE COURSES

- 8.1** The diagrams in Attachment B show the courses, including the approximate angles between the legs, the order in which marks are to be passed and the side on which each mark is to be left.
- 8.2** No later than the warning signal, the course to be sailed will be designated by displaying a numeral pennant 4 or 5 from the race committee vessel.
- 8.3** No later than the warning signal, the Race Committee will display on a white board the approximate compass bearing, and distance of the first leg.
- 8.4** Mark 3s/3p is a gate. In the event one of the gate marks is missing, the single remaining mark shall be rounded to port.
- 8.5** Mark 2 is an offset mark adjacent to mark 1.

- 8.6** Blue Circle: Mark LM is a limiting mark set 5-8 boat lengths to leeward of mark 1 with the intention of keeping boats away from the port tack layline. Mark LM shall be left to port on both the upwind and the downwind legs. The location of the mark LM or the failure of the Race Committee to set the mark LM shall not be grounds for a boat to request redress. This changes RRS 62.1(a).

9 MARKS

- 9.1** Blue Circle Original Marks: Marks 1, 2, and 3s/3p will be orange inflatable marks. Mark LM will be a pink inflatable mark.
- 9.2** Blue Circle New Marks: New marks 1 and 3s/3p, as provided in SI 11, will be yellow inflatable marks.
- 9.3** White Circle Original Marks: Marks 1, 2, and 3s/3p will be yellow inflatable marks.
- 9.4** White Circle New Marks: New marks 1 and 3s/p, as provided in SI 11, will be orange inflatable marks.
- 9.5** The starting mark will either be a green inflatable mark or a Race Committee signal boat displaying an orange flag.
- 9.6** The finishing mark will either be a pink inflatable mark or a Race Committee signal boat displaying a blue flag.

10 THE START

- 10.1** The starting line will be between a staff displaying an orange flag on the starboard end signal boat and the course side of the port-end starting mark OR a staff displaying an orange flag on the port end signal boat.
- 10.2** A boat starting later than 5 minutes after the starting signal will be scored DNS. This changes RRS 63.1, A4.1 and A.5.
- 10.3** The Race Committee will attempt to notify OCS boats by radio on their respective circle VHF channel. Failure of equipment, failure to hear a hail, delay in hailing or the order in which hails are given will not be grounds for redress. This changes RRS 62.1(a).

11 CHANGE OF THE NEXT LEG OF THE COURSE

- 11.1** To change the next leg of the course, the Race Committee will lay a new mark (or move the finishing line to a new position) and remove the original mark as soon as practicable. When in a subsequent change a new mark is replaced, it will be replaced by an original mark.
- 11.2** The Race Committee may change the course by up to five degrees in bearing and/or 0.2 nm in length without a signal or change of mark color. This changes RRS 33.
- 11.3** In the event of a windward change of course, mark 2 will not be set.
- 11.4** Blue Circle: In the event of a windward change of course, mark LM will not be set.

12 THE FINISH

- 12.1** The finishing line for Course 4 will be between a staff displaying a blue flag on the Race Committee signal vessel and the nearby finishing mark OR a staff displaying a blue flag on a Race Committee vessel.
- 12.2** The finishing line for Course 5 will be between a staff displaying a blue flag on the Race Committee vessel at the starboard end and the course side of the nearby finishing mark located approximately .1 nautical mile to windward of mark 1.

13 PENALTY SYSTEM

- 13.1** Appendix V will apply.
- 13.2** A boat that has taken a penalty shall complete an online penalty acknowledgement form or a paper form available from the Jury Secretary and submit/file it with the Jury Secretary no later than the end of protest time.
- 13.3** For breaches of the rules other than Part 2, the protest committee may award a lesser penalty than DSQ. This changes RRS 64.1.

14 TIME LIMITS

- 14.1** The time limit for the first boat to sail the course and finish will be three hours from the starting signal.
- 14.2** If no boat has passed their first windward mark 45 minutes after the starting signal, the race shall be abandoned.
- 14.3** Boats failing to finish within 30 minutes after the first boat sails the course and finishes will be scored Did Not Finish. This changes RRS 35, A4.1 and A.5.

15 PROTESTS AND REQUESTS FOR REDRESS

- 15.1** Protest forms are available on the regatta website or at the race office in the New York Yacht Club Sailing Center. Protests shall be delivered to the Protest Secretary within one hour of the docking time of the Race Committee signal boat after the last race of the day. This time will be posted on the Official Notice Board. This changes RRS 61.3 and 62.2.
- 15.2** Notices will be posted as soon as possible on the Protest Notice Board. Hearings will be held in the Jury Room at the New York Yacht Club Sailing Center on each day beginning as soon as possible.
- 15.3** Appendix T will apply.
- 15.4** Breaches of instructions 5.3, 13.2, 17, 18 and 20 will not be grounds for protest by a boat. This changes RRS 60.1(a).
- 15.5** On the last day of the regatta:
 - (a) a request for reopening a hearing shall be delivered within the protest time limit if the party requesting reopening was informed of the decision on the previous day;
 - (b) a request for reopening a hearing held on the last day shall be delivered no later than 30 minutes after the party requesting reopening was informed of the decision on that day;
 - (c) the time limit to request redress based upon an action or omission of the Race Committee or jury shall be 30 minutes after the decision was posted. This changes RRS 62 and 66.

16 SCORING

- 16.1** One race is required to be completed to constitute a series. This changes M20 Class Rule I.3.2(a)
- 16.2** When fewer than six (6) races have been completed, a boat's series score will be the total of her race scores. When six (6) or more races have been completed, a boat's series scores will be the total of her race scores excluding her worst score. This changes RRS A2.

17 SAFETY REGULATIONS

A boat that retires from a race shall notify the Race Committee and/or the jury as soon as possible.

18 REPLACEMENT OF EQUIPMENT

- 18.1** In the case of damage, boats and/or equipment may only be substituted with the written permission of the jury. When the damage occurs later than 90 minutes before the first scheduled start of the day and before the start of the last race of the day, provisional verbal permission shall be obtained from the jury or Race Committee. Written permission by the jury shall be obtained before the end of the Protest Time limit on the day in which the substitution takes place.

19 COACH AND SUPPORT BOATS

- 19.1** White Circle: Coach and other support persons must register with the Organizing Authority prior to the first day of racing.
- 19.2** White Circle: All registered coach and support boats will carry on board and operate while on the water a VHF radio capable of transmitting and receiving on VHF Channels 16, 71 and 72 and agree to assist the Race Committee if directed to do so.
- 19.3** White Circle: Competitors shall have no communication with, and boats shall not be tied to, coach or support boats from the first warning signal (or any other time the Organizing Authority considers appropriate) of the day until racing has been concluded for the day. Between races, coach and support boats shall not approach, communicate with or transfer provisions or equipment to or from their supported boats unless in a medical or emergency requirement threatening the health of the crew or the flotation of the boat and only with the expressed permission of the jury or the Race Committee.

- 19.4** White Circle: Registered coach and support boats and their personnel shall stay at least 100 metres below the starting line from the time of the preparatory signal until five minutes after the start of any race. After this time, coach and support boats may then proceed parallel to the course on the starboard side of the course facing the wind at a distance of at least 100 metres outside areas where boats are racing. Coach and support boats shall not go above the weather marks or the Course 5 finishing line or below the leeward marks or the Course 4 finishing line at any other time while boats are racing.
- 19.5** White Circle: Any breach of SI 19.1, 19.2, 19.3 or 19.4 by a support person boat may result in the protest committee convening a hearing under rules 60.3(d) and 63.9. The protest committee may take action against a support person acting under rule 64.4(a), and acting under rule 64.4(b) may penalize any or all boats serviced by that support person.
- 19.6** White Circle: Coach and support boats shall, when requested by the Race Committee, tow or assist boats not associated with them. Coach and support boats will monitor their circle VHF channel and shall follow all instructions from the Race Committee.
- 19.7** Blue Circle: IMIC37 Class Rule H.4 applies.

20 PRIZES

- 20.1** Overall series trophies will be awarded to the top finishers in each class.
- 20.2** Other trophies will be awarded at the discretion of the Organizing Authority.

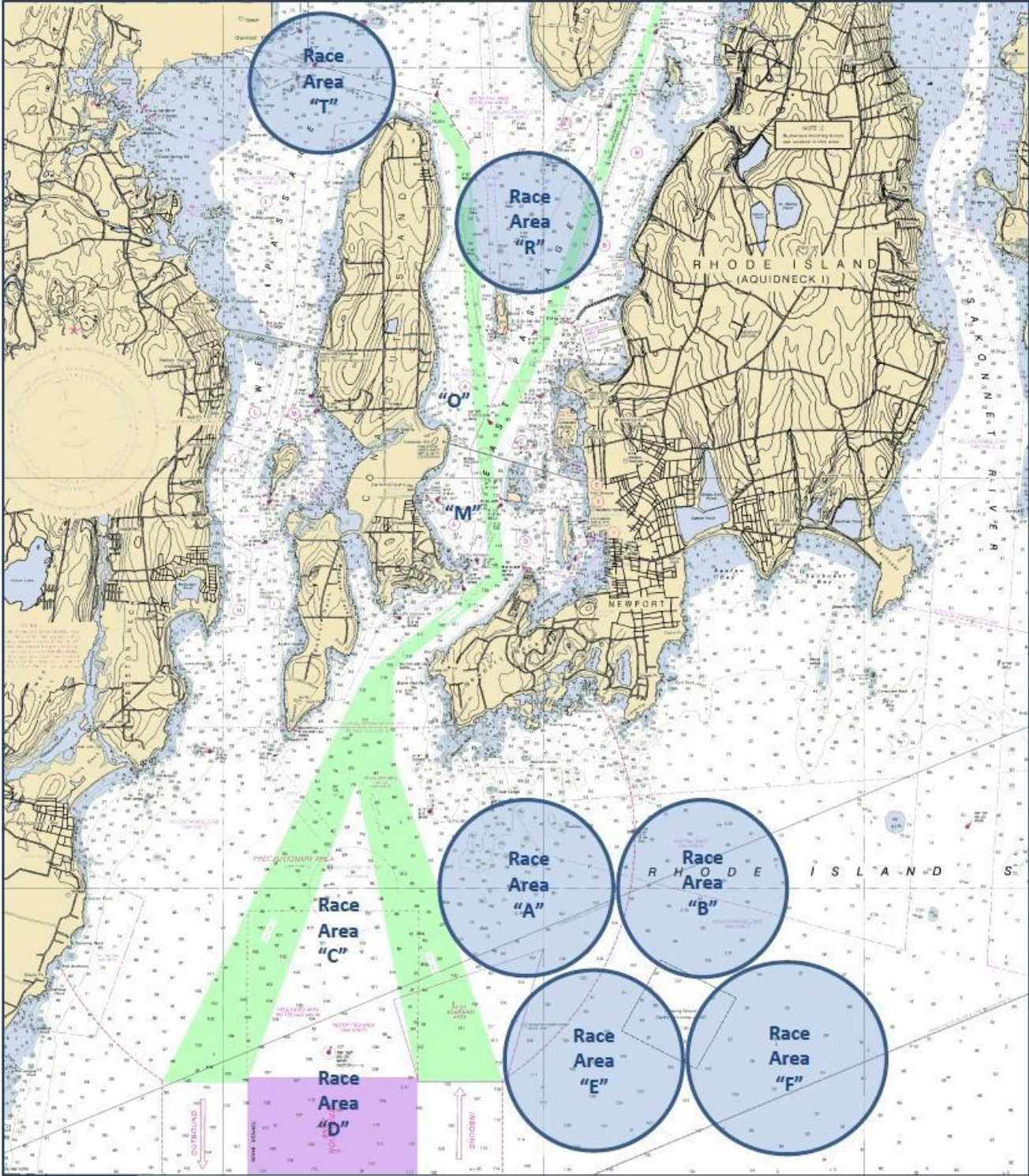
21 DISCLAIMER OF LIABILITY

- 21.1** Competitors participate in the regatta entirely at their own risk. It is the competitor's decision to enter the Championship or to start or continue in any race. Competitors' attention is drawn to RRS Fundamental Rule 4, Decision to Race. The Organizing Authority will not accept any liability for material damage or personal injury or death sustained in conjunction with or prior to, during, or after the regatta.
- 21.2** As a condition of entry, each owner, skipper and individual participating crew members shall submit an online liability waiver/media release. The fully executed Waiver & Release of Liability for shall be submitted prior to racing. The waiver form link can be found on the event webpage.
- 21.3** Boats shall not be scored unless the skipper/person-in-charge has submitted a liability & media waiver form.



© Copyright New York Yacht Club 2019. All Rights Reserved.

New York Yacht Club; NYYC; Harbour Court, club burgee; certain other logos and marks are trademarks or registered trademarks of the New York Yacht Club in the United States and other countries. All Rights Reserved. Use is prohibited without written permission of the Secretary of the New York Yacht Club.

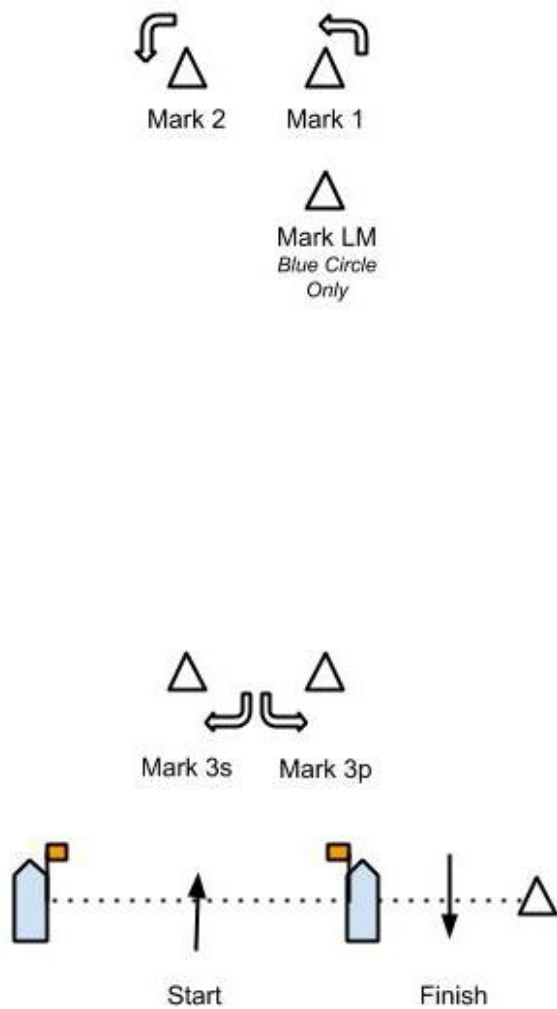
SI ATTACHMENT A – PRIMARY RACE AREAS



SI ATTACHMENT B – COURSE DIAGRAMS

	Course 4	Start - 1p - 2p - 3s/3p - 1p - 2p - Finish (downwind)
	Course 5	Start - 1p - 2p - 3s/3p - 1p - 2p - 3s/3p - Finish (upwind)

COURSE #4 - 4 Legs



COURSE #5 - 5 legs

